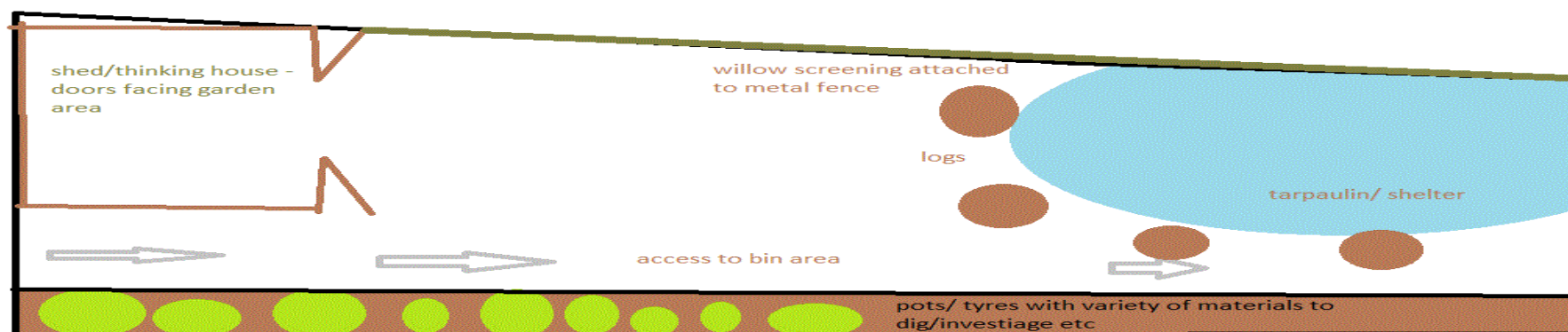


Outside provision – a temporary garden



In August 2013, fire destroyed John Ray Infant School in Braintree. A temporary school was created nearby and the four reception classes given access to an enclosed space across the front of the buildings. Thought was given as to how to best use the space and this included dividing off a section to make a more natural area.

The original plan to create a garden/natural space in one third of the playground Nov 13



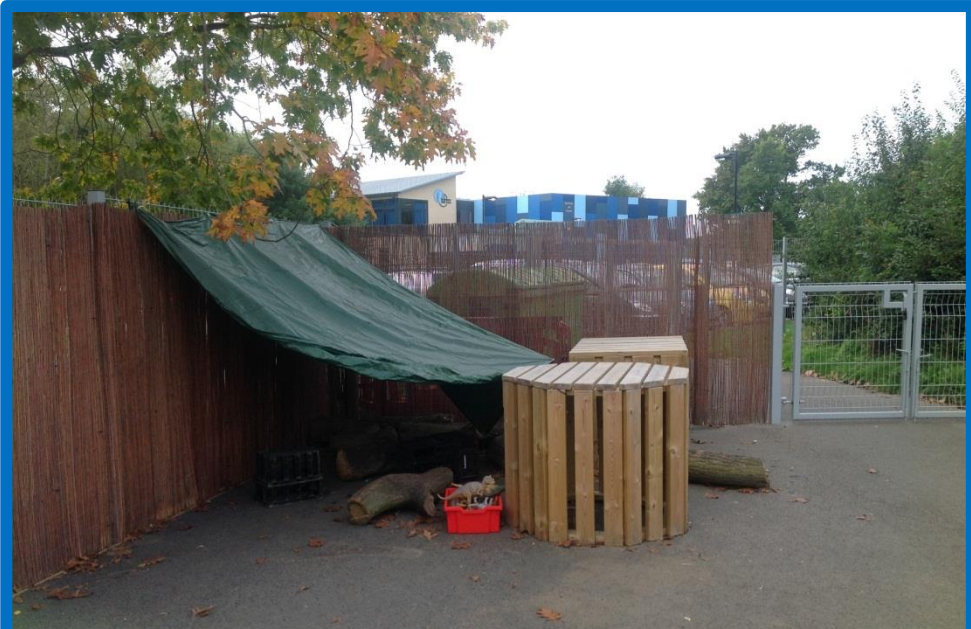
New cosy huts have arrived. Jan 14



Cosy huts have been moved to the side. Fencing has been installed. Oct 14



A circle of logs has been created and complements the arrangement that will be offered in Forest Schools. Jan 14



A cosy space has been created and natural loose parts can be transported. Oct 14

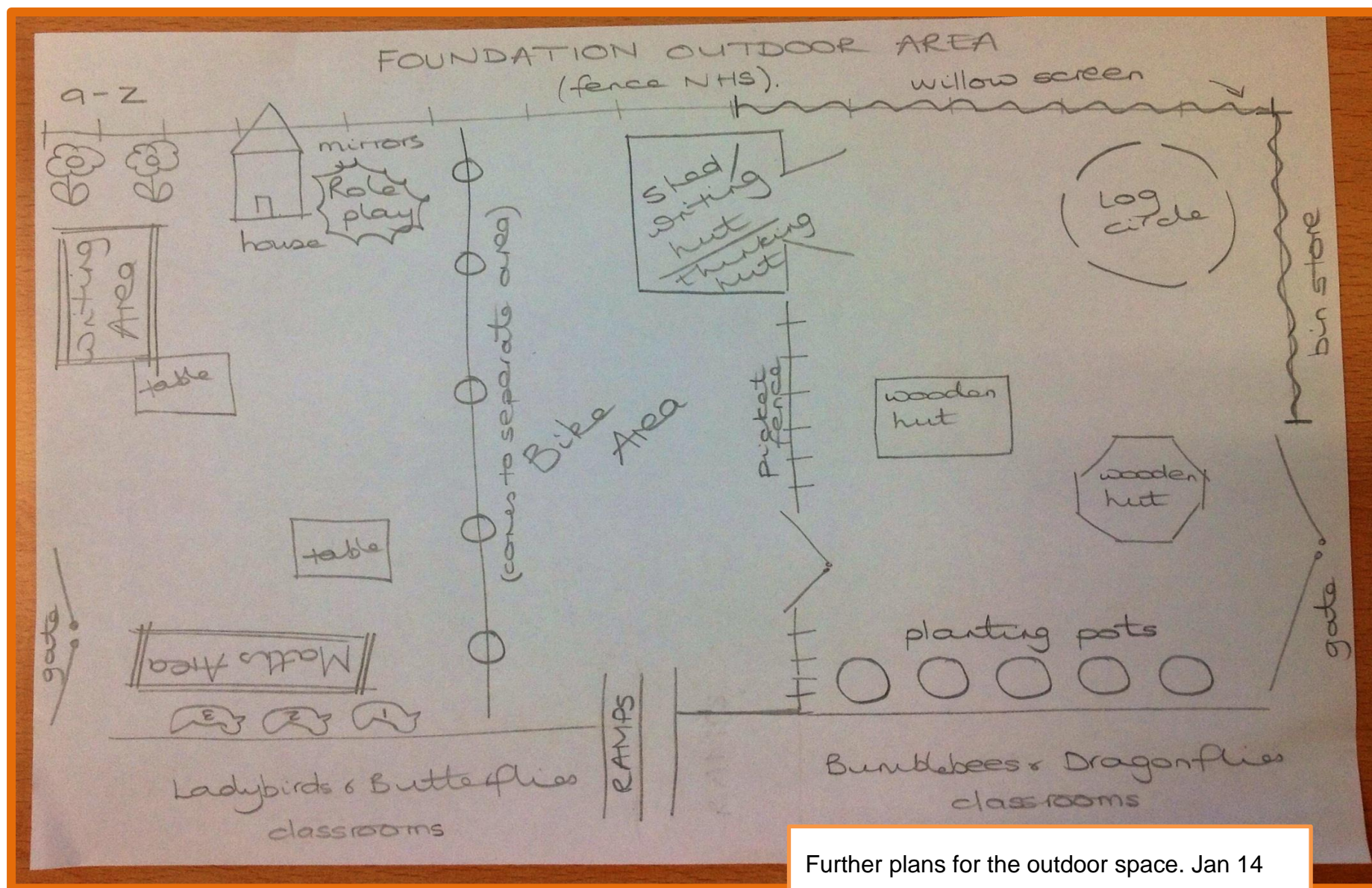


The view towards the area where the new garden is being established. Children can help themselves to building materials to create a range of roads and structures to complement bike play.

Jan 14



The same view in Oct 14. The addition of willow fencing is particularly striking and screens the space from the outside. The area is divided using wooden fencing.



Further plans for the outdoor space. Jan 14



A shed and planters face outwards, both dividing the area and creating interest.



Photographs: John Ray Infant School.



Photographs: John Ray Infant School.